



WHAT'S NEW

Details on SVRI Forum Side Events, 25 October 2019 are now available online. Limited number of participants per side event so register soon
<https://www.svri.org/forums/forum2019/events.html>



REGISTRATION

DON'T MISS OUR EARLY REGISTRATION DEADLINE WHICH CLOSING ON 31 JULY 2019.

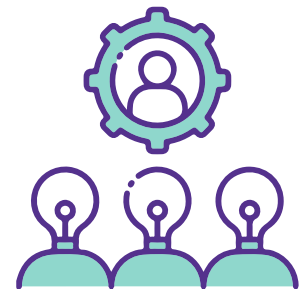
Registrations fees will increase from 1 August 2019 to 30 September 2019 as follows:

- HIC - R9 000
- LMIC - R6 500

WORKSHOPS

Workshop seats are filling up fast. Please do not miss the opportunity to attend the workshops by registering online
<https://www.svri.org/forums/forum2019/fees.html>

For more information, please visit our website
<http://www.svri.org/forums/forum2019/preworkshop.html>



BECOME AN EXHIBITOR

Only 6 stands left for SALE.

Don't miss the deadline of 2 September 2019. If you are interested in booking an exhibition stand, please visit our website
<http://www.svri.org/forums/forum2019/exhibitors.html>



SPONSORS

To partner with us on the Forum, please visit our website:
<http://www.svri.org/forums/forum2019/sponsors.html>



#SVRIForum2019
#TimesNow
#SVRIForum
www.svri.org
svriforum@mrc.ac.za
@TheSVRI

Contact Information

Sexual Violence Research Initiative
Gender and Health Research Unit

Medical Research Council

Private Bag X385 | 0001 | Pretoria | South Africa