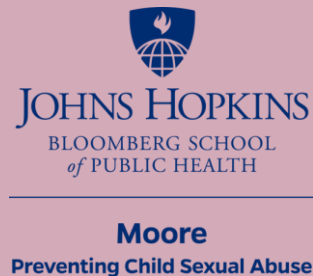


# From Evidence Gaps to Action:

## Exploring How to Prevent Childhood Sexual Violence by Expanding our Understanding of Perpetration

21 January 2026, 3pm SAST

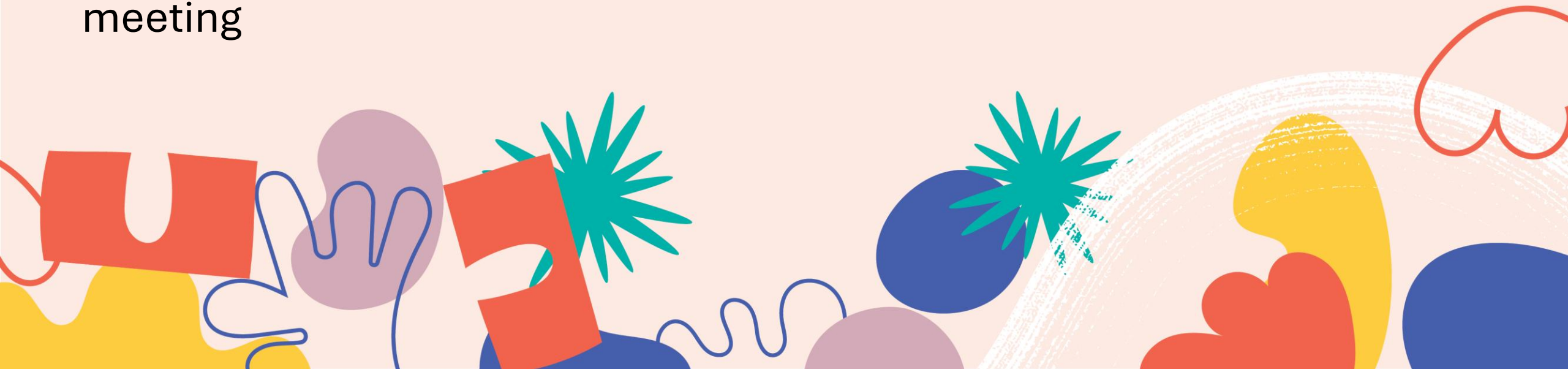


# Agenda

|                                                                                             |                                                                                                                                               |
|---------------------------------------------------------------------------------------------|-----------------------------------------------------------------------------------------------------------------------------------------------|
| Opening and Introduction                                                                    | <b>Nicolas Makharashvili</b>   Safe Futures Hub<br><b>Alessandra Guedes</b>   UNICEF - Office of Strategy and Evidence Innocenti              |
| Insights from the CSV Research Agenda                                                       | <b>Joan Njagi</b>   SVRI                                                                                                                      |
| Presentation on Perpetration Prevalence, Risk and Protective Factors, & Prevention Research | <b>Elizabeth Letourneau</b>   MOORE                                                                                                           |
| Q&A                                                                                         |                                                                                                                                               |
| Case- study Presentations from LMICs Implementing Perpetration Prevention Strategies        | <b>Sidnei R. Priolo Filho</b>   Universidade Tuiuti do Paraná, Brazil)<br><b>Frederico L. Cabredo</b>   World Hope International, Philippines |
| Panel Discussion with Survivor Advocates, Practitioners (PbK) & Researchers                 | <b>Samuel Likindikoki</b>   Muhimbili University of Health and Allied Sciences<br><b>Namrata Joshi</b>   ARPAN                                |
| Q&A                                                                                         |                                                                                                                                               |
| Closing                                                                                     | <b>Alessandra Guedes</b>   UNICEF - Office of Strategy and Evidence Innocenti                                                                 |

# Housekeeping

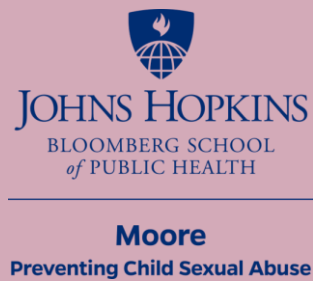
- **Duration:** 1.5 hours
- **Recording:** The event will be recorded and shared.
- **Audience:** The audience is muted – please introduce yourself and add questions & comments in the chat or the Q&A box
- **Captions:** Live captions are available - click “**Show Captions**” on your Zoom toolbar to view real-time subtitles during the meeting



# Insights from the Shared Research Agenda on Child Sexual Violence in LMICs:

## Why Perpetration Matters

Joan Njagi (Child Sexual Violence Researcher, SVRI)




# Current state of CSV evidence in LMICs

*The shared research agenda on CSV was developed in response to:*

- Lack of a cohesive evidence base for the field
  - Methodological and knowledge gaps
  - Ethical concerns
- Evidence from HICs dominates the field
- Intersectional approach is mostly absent



The background is a light teal color with various abstract, colorful shapes and patterns. In the top left, there's a red shape and a teal starburst. In the top right, there's a pink cloud-like shape and a yellow shape with a red outline. In the bottom left, there's a red cloud-like shape and a yellow shape. In the bottom right, there's a red cloud-like shape and a teal starburst. There are also some wavy lines and other abstract shapes in various colors.

The gaps provide basis for a collaborative, participatory, inclusive and collective decision-making process of setting research priorities and agenda for child sexual violence (CSV) in low- and middle-income countries (LMICs)

**For too long research agendas have been set by too few, often the loudest, most senior in the room.**

# Collaborative and Inclusive Priority Setting

**Scoping review  
to develop  
domains**

5 domains established:

1

**Generating  
research  
Questions**

3

380 questions generated  
by Advisory Group,  
children, youth, CSV  
survivors, LGBTQI+  
people, indigenous  
people & people with  
disabilities.

**Global  
ranking**

265 valid responses  
74% from LMICs –  
established priorities

5

2

**Stewardship &  
Advisory  
Groups  
established**

Researchers, practitioners, and  
advocates met monthly over 18 months

4

**RAG (red,  
amber green)  
rating by  
Stewardship  
Group**

49 questions generated

6

**Wide  
dissemination**





# Child Health Nutrition Research Initiative - CHNRI

## A methodology for systematic priority setting

Domains:

1. Understanding CSV
2. CSV prevention
3. CSV response
4. CSV among vulnerable & marginalized populations
5. CSV measures & methods



# Why a shared research agenda?

1

**Identify**  
evidence gaps

2

**Assist** research  
planning and  
fundraising

3

**Serve** as an  
advocacy tool

4

**Serve** as a  
monitoring tool

5

**Guide** SVRI  
grant-making



# Priorities Relevant to CSV Perpetration

- Prevalence and drivers of harmful sexual behaviour in adolescent peer relationships
- Risk and protective factors shaping pathways into perpetration and harmful sexual behaviors
- Evidence on what works to prevent perpetration and enable early intervention
- Effective, perpetrator-focused approaches integrated into broader prevention systems in LMICs



## Other Priorities Shaping Perpetration Prevention

- Social and gender norms shaping pathways into harmful sexual behaviour
- Adapting interventions for marginalised and vulnerable children and youth
- Strengthening measurement in contexts of under-reporting and limited data



# Why this matters

*These priorities demonstrate:*

- The field's recognition of perpetration and harmful sexual behaviors as central to effective prevention
- How limited the evidence base remains in LMICs
- Urgent need for better data, stronger theory and more rigorously tested interventions from LMICs



# Resources

- CSV RPS webpage

<https://www.svri.org/developing-shared-research-agenda-on-child-sexual-violence-csv-for-low-and-middle-income-countries/>

- CSV Research Priorities English Report

[https://www.svri.org/wp-content/uploads/2025/02/SVRI\\_C\\_011\\_CSV\\_Report\\_ENGLISH\\_V2\\_WEB.pdf](https://www.svri.org/wp-content/uploads/2025/02/SVRI_C_011_CSV_Report_ENGLISH_V2_WEB.pdf)



The background is a solid light purple color. It is decorated with various abstract, hand-drawn style elements in the corners. In the top-left, there is a red shape, a teal starburst, and a teal wavy line. In the top-right, there are purple and yellow organic shapes with teal outlines. In the bottom-left, there is a white brushstroke arc, a red cloud-like shape, and a yellow shape. In the bottom-right, there is a red rectangular shape, a teal starburst, a white circle, and purple concentric circles.

**Thank You!**