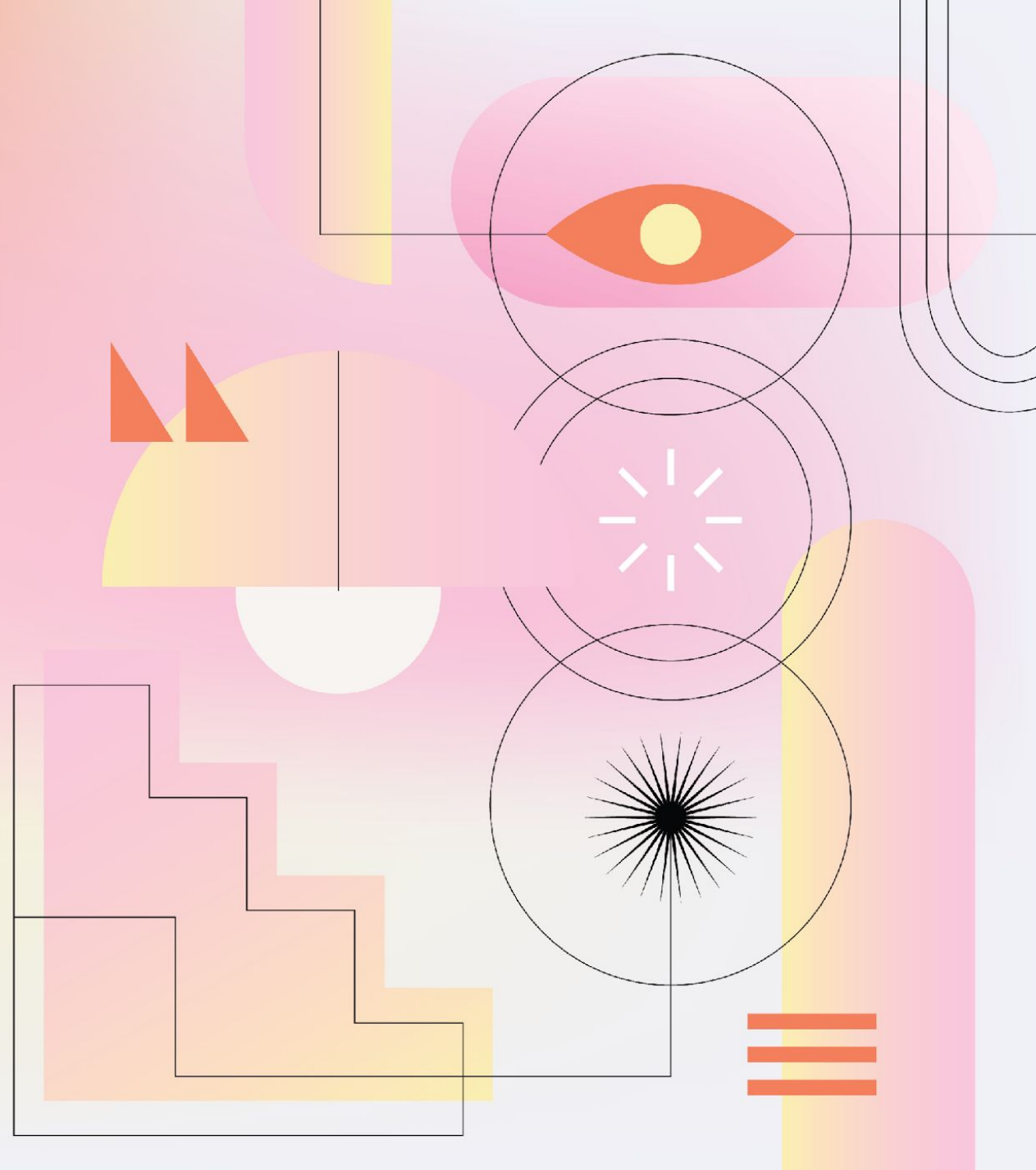


# Measuring TFGBV: Ethics, Methods, and Meaning

---

16 APRIL 2026

---





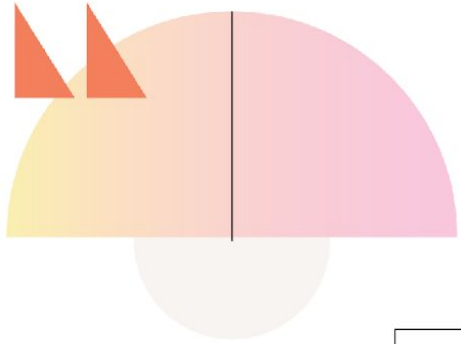
## Agenda

Welcome and opening words

Panel Discussion

Closing





# Working groups: We're launching two output-focused workstreams!

***Francia Baltazar***

*Measurement & Ethical Research*

***Barsha Chakraborty***

*Policy Influence, Regulation and Advocacy*

**Sign up via survey**





SVRI  
sexual  
violence  
research  
initiative

# Panel: Measurement & Ethical Research on TFGBV

---



**Moderated by**  
**Sangeeta Chatterji**  
*Research Director, SVRI*



***Jackline Namubiru***

*Senior Associate, Gender Research  
and Policy – Innovations for Poverty  
Action*



***Victoria Kiasyo Isika***

*Associate Director of Policy and  
Gender – Innovations for Poverty  
Action*



# Technology-facilitated Gender-based Violence (TFGBV) Community of Practice



Victoria Kiasyo Isika (PhD) - Associate Director, Policy & Gender

16th April, 2026



# Overview of the TFGBV Compendium



The compendium is a **publicly available resource** developed by sistemaFutura and Innovations for Poverty Action (IPA)

Brings together **existing validated quantitative TFGBV survey instruments**

These instruments were identified through a **systematic review of peer-reviewed literature published between 2009–2025**

Which found that most validated instruments were developed in HICs, **with limited representation from LMICs**

The compendium is not intended to be exhaustive, but rather a **living document that will evolve as new measures emerge.**

We hope it serves as a stepping stone toward creating TFGBV instruments that are **both locally grounded and adaptable across contexts.**

# Compendium Contents and Intended Users



## 19 validated quantitative instruments

- cyberbullying;
- technology-facilitated intimate partner violence;
- online sexual harassment;
- image-based sexual abuse;
- cyber dating abuse;
- sextortion etc



## Covers diverse populations

- adolescents;
- young adults,
- working adults, etc



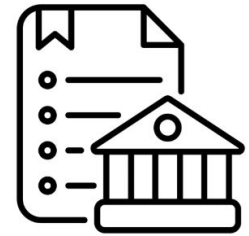
## Victimization, Perpetration and Context

- Identifies whether measures assess victimization, perpetration, or both.
- Shows coverage of frequency, severity, and impact.
- Notes whether relational context is included.



## Methodological and Ethical Guidance

- Synthesizes key methodological considerations for measuring TFGBV.
- Draws on guidance from UNFPA and ICRW.



## Build the TFGBV Evidence Base for Action

- Intended users - researchers, policymakers, practitioners.
- To build a stronger evidence base on TFGBV.
- To shape policies, programs, and decision-making to address TFGBV.

# Contextualizing TFGBV Measures for Uganda & Nigeria

Q3-Q4 2024

## Mapping Existing TFGBV Measures

- Conducted a thorough scan of existing surveys measuring various manifestations of TFGBV
- (later published as “TFGBV compendium” in 2026)

Q2 2025 to date

## Gov’t & Partnership Engagement

- Engaging stakeholders in co-creating the TFGBV tool and exploring how it could be integrated into their data collection systems.
- Integration of finalised tool into government systems would enable routine TFGBV data collection to inform policies, decisions, and programmes.

Q2-Q3 2025

## Co-Creation Workshops w/ Women

- From the scan, we found that most existing TFGBV surveys are developed in HICs, with limited input from LMIC contexts.
- But, we still drew on these existing tools and held workshops with women in Uganda and Nigeria to understand their lived experiences of TFGBV.
- This process helped us co-create a TFGBV tool grounded in local realities.

Q2 -Q3 2026

## Field Validation & Dissemination

- Between April - July, we will be testing and validating the TFGBV tool we co-created women
- Dissemination of the tool scheduled for July

# Qualitative Workshops with Women

Held **participatory workshops with urban women in Uganda and Nigeria** - informed by our systematic review of existing TFGBV instruments

Purposively sampled women from **higher and lower socio-economic backgrounds**

Structured discussions around **short vignettes depicting different forms of TFGBV** - doxxing, group attacks, sextortion etc to understand:

- How familiar they are with the form of violence
- Whether they had heard of something similar happening in their community
- How they understood its severity and frequency

This prompted them to share their own stories - **these deeply localized accounts, ultimately shaped the development of our TFGBV tool**



# What We Found: In Brief

**Perpetrators were mostly men known to women** - current or former partners, coworkers, neighbours etc

**Women also participated in certain forms of harms** - spreading rumours, joining group attacks, sharing intimate images out of envy

Showing that **TFGBV more complex than a simple binary of male perpetrators and female victims.**

**Socioeconomic status** informed women's experiences of TFGBV e.g

- Most **lower income women** used their phones and social media to sell products, find clients, or access job opportunities - exposing them to certain forms of TFGBV - **financial scams, job scams**
- **Higher income women** - showed greater digital literacy - the more visible a woman becomes online, the more that visibility can be used against her - doxxing and reputational attacks targeting their public profiles



# Suggestions for Adapting Measures Across Contexts

Based on our experience, we suggest:

**Starting with what already exists** - review existing validated measures before creating something new.

**Co-creating tools with affected communities from the outset**, and refining them as needed to ensure they reflect lived realities.

**Involving relevant government agencies and other strategic actors in the tool's co-creation process** - to strengthen ownership, improve relevance, and increase the likelihood of uptake within existing data systems and processes.

Investing time in **translating**, **pre-testing**, and **piloting** the tool.



# Key Gaps in TFGBV Measurement Our Work Aims to Address

## KEY GAP

## HOW OUR WORK RESPONDS

---

**Limited context-specific and lived-experience grounded TFGBV tools**

- We worked directly with women through qualitative workshops to ensure the tool is grounded in their lived realities.

---

**Limited government and stakeholder involvement in TFGBV tool design**

- We involved government and key stakeholders early in the process to build ownership and ensure relevance for future uptake.

---

**Limited integration of TFGBV tools into gov't data systems**

- We are working with government stakeholders to explore pathways for integrating the tool into existing data systems, to strengthen the translation of TFGBV evidence into policy and programmatic action.
-



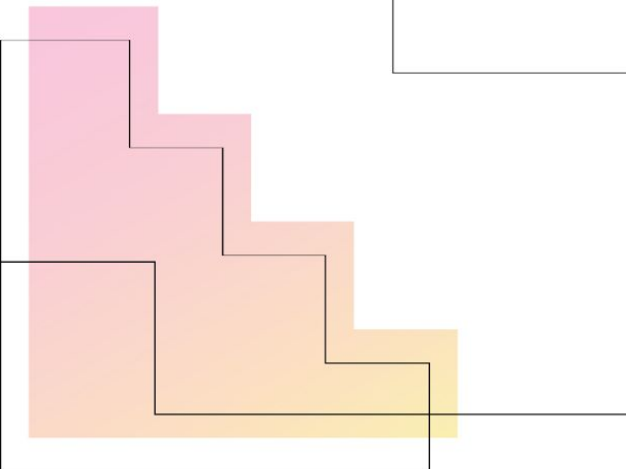
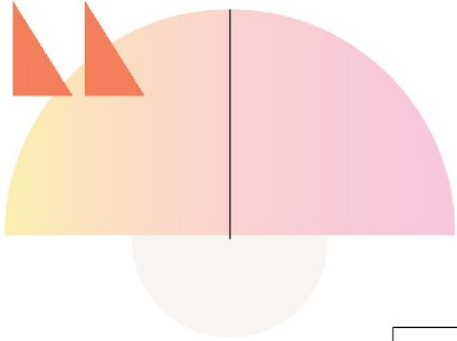
# Thank you for your attention

[vkisika@poverty-action.org](mailto:vkisika@poverty-action.org)

[poverty-action.org](https://poverty-action.org)



***Lynnmarie Sardinhal***  
***Technical Officer on Violence Against Women Data and  
Measurement – World Health Organization***



# Technology-facilitated Gender-based Violence (TFGBV) Community of Practice

16 April 2026

LynnMarie Sardinha, Phd

Technical Officer, Violence against Women Data and Measurement



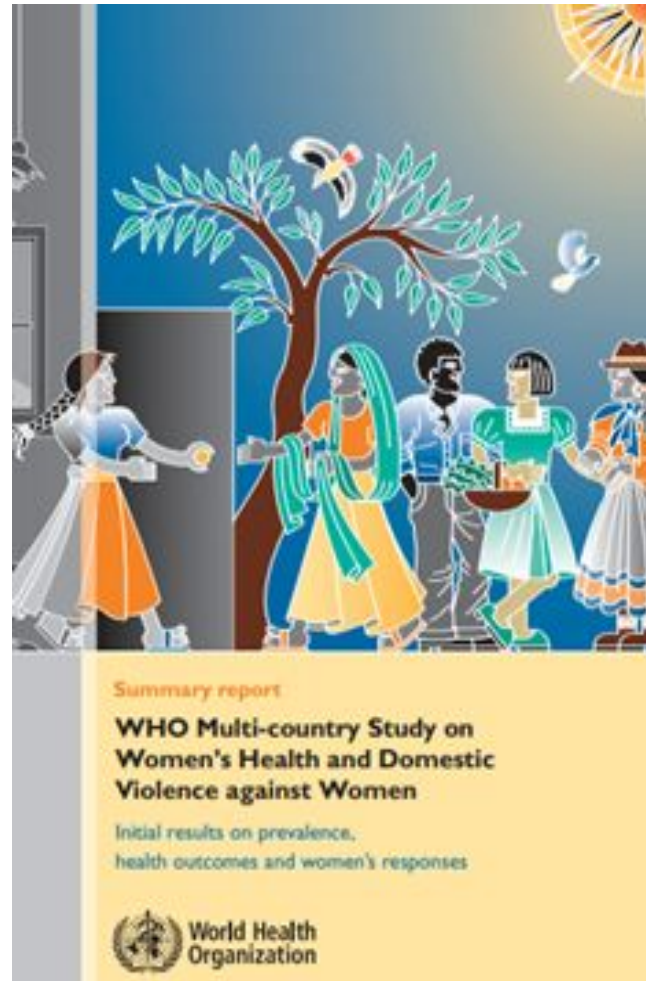
**World Health  
Organization**



# WHO Multi-country study violence against women survey instrument

## Key data obtained:

- Prevalence and patterns of various forms of intimate partner and non-partner violence:
  - Physical
  - Sexual
  - Psychological
  - Economic abuse by a partner
  - Physical and sexual violence by someone other than a partner
  - Sexual harassment
    - School
    - Public spaces
    - Workplace
- Risk factors for violence.
- Association between violence and a wide range of health outcomes.
- Coping strategies including help seeking, reporting.



# A PROPOSED COMMON CONCEPTUAL DEFINITION

Result of a multistakeholder expert group meeting convened in November 2022



**Technology-facilitated violence against women** (“TF VAW”) is any act that is committed, assisted, aggravated, or amplified by the use of information communication technologies or other digital tools, that results in or is likely to result in physical, sexual, psychological, social, political, or economic harm, or other infringements of rights and freedoms.

# KEY ELEMENTS OF THE DEFINITION

## Technology-facilitated

- refers to act committed through technology rather than solely on online spaces
- time-invariant to hold true despite evolving circumstances

## Continuum online-offline and offline-online

- *committed, assisted, aggravated or amplified*
- also includes situations where domestic violence is aggravated through the use of geolocation tools or cyber stalking

## Gender-based

- it is gendered, used to perpetuate and reinforce gender inequality
- affects women and girls and gender non-conforming people

## Violence

- without examples of current manifestations of TF VAW
- Broad enough to encapsulate the full spectrum of TF VAW

# Technology-facilitated violence against women (TF VAW) measured as a MODALITY of violence in the WHO Multi-country Study questionnaire

Summary report

## WHO Multi-country Study on Women's Health and Domestic Violence against Women

Initial results on prevalence, health outcomes and women's responses



Updates of the WHO Multi-country survey questionnaire (long and short versions) based on:

- ongoing measurement work and field learnings
- Pilot-testing
- Cognitive and pilot testing of TF VAW questions

# Measuring TF VAW as a modality

## Controlling behaviours by an intimate partner

- a) Try to stop you from seeing female friends
- b) Try to restrict your contact with your family of birth
- c) Stop you from seeking healthcare for yourself
- d) Get jealous or angry if you (speak/spoke) to another man
- e) Accuse of being unfaithful
- f) **He (uses/used) mobile technology to check where you (are/were) or track you via GPS in a way that (makes/made) you feel controlled?**

## Non-partner sexual violence/harassment

At any place you ever worked, have you ever experienced unwanted sexual advances or behaviours that made you feel uncomfortable or afraid?

**Has anyone ever sent you unwanted personal electronic messages with sexual content such as remarks, invitations, or pictures that were hurtful to you or made you feel uncomfortable? For example, via Facebook, cell phone, e-mail. Not including spam.**

**Shared sexual photos or videos of you via the internet, mobile phones, text messages (SMS), instant messages, or social media without your consent**

# Measuring TF VAW as a modality

## Acts of TF GBV measured in Vanuatu 2024

### Intimate partner violence (s717)

- **Restricted your access** to your phone, internet or social media sites
- Asked you to perform any sexual acts on the phone or another device
- Sent you messages or images, or made you watch something of a sexual nature
- Send messages or images of a sexual nature that you did not want
- Threatened or actually did share private or sexual images
- **Monitored your phone or other devices to track your movements,** who you talk to, or where you go

### Non-partner violence by men (N11)

- Asked you to perform any sexual acts on the phone or another device
- Sent you messages or images, or made you watch something of a sexual nature
- Send messages or images of a sexual nature that you did not want
- Threatened or actually did share private or sexual images

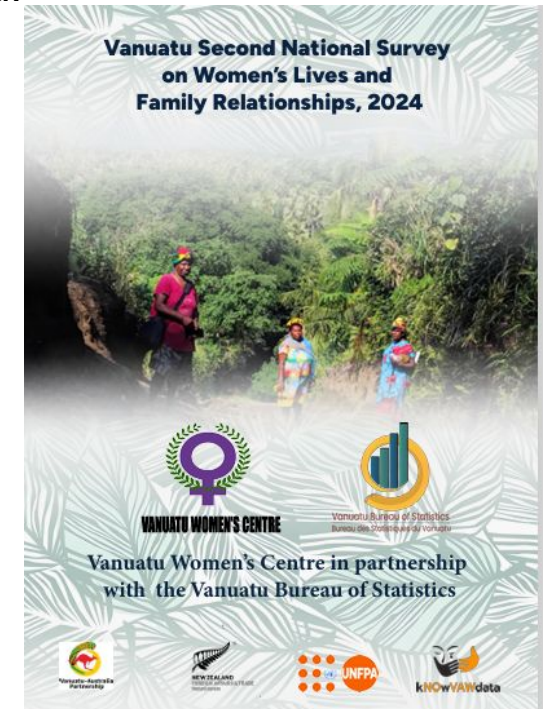
### Intimate partner violence

- Controlling behaviour
- Psychological IPV
- Physical IPV
- Sexual IPV
- Economic Abuse

### Non-partner sexual violence

### Sexual harassment

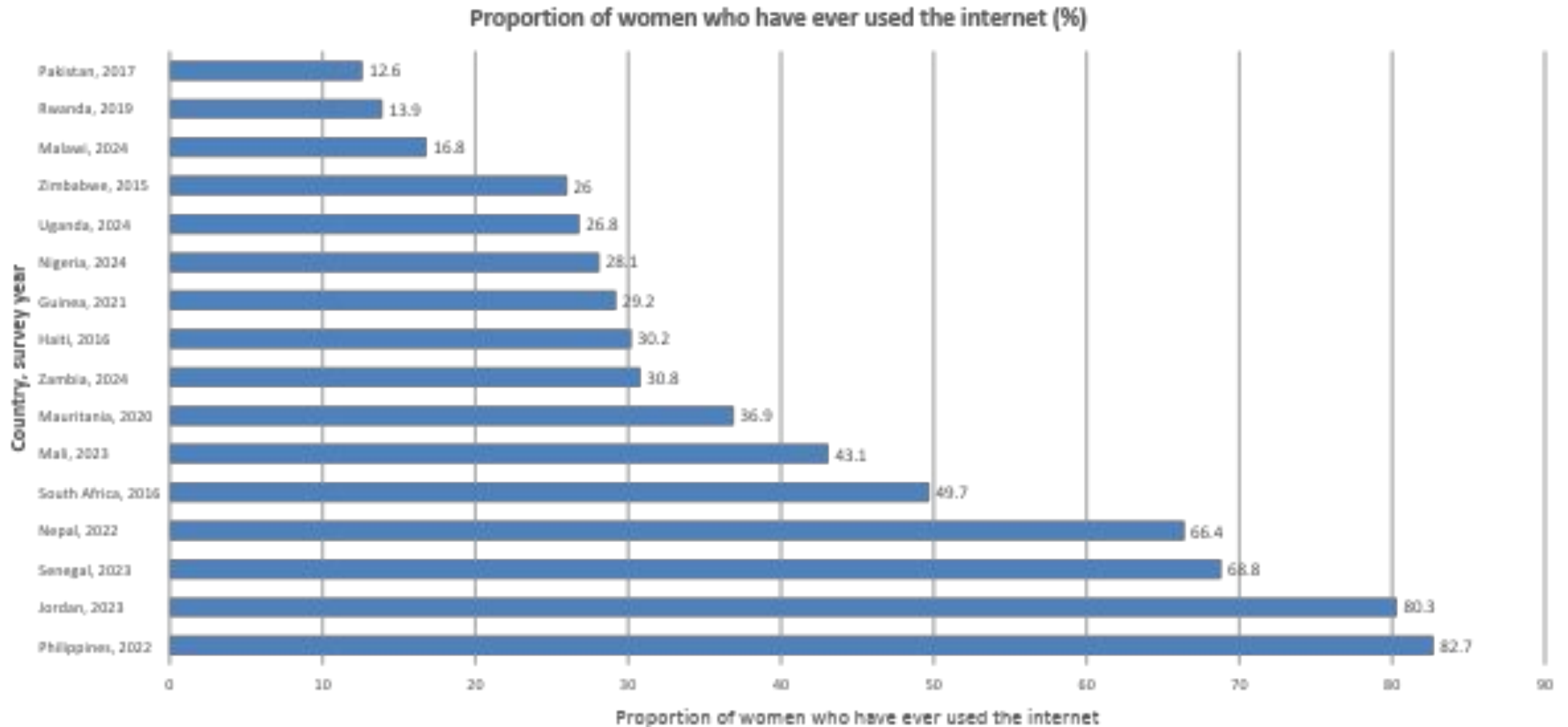
- School
- Workplace
- Public spaces



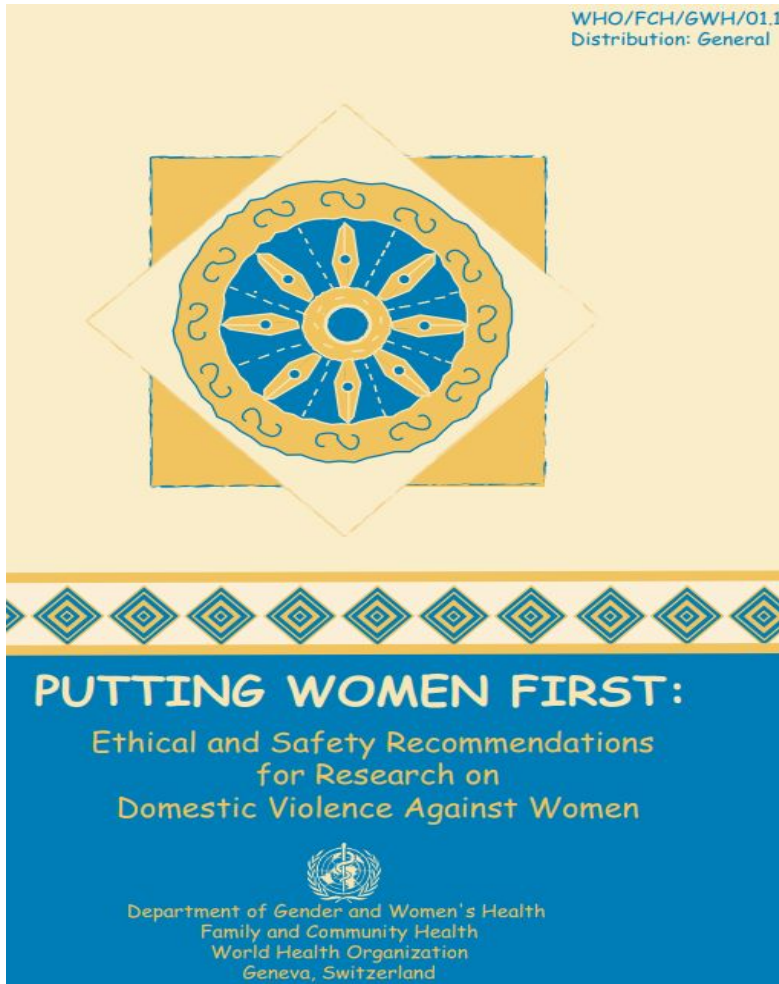
# Survey measurement considerations for TF VAW

- Denominators – which group of women are we including/excluding when measuring TF VAW
- Types of acts included and measured and what ‘constructs’ forms of violence are these measured as
- Balance between standardization and capturing country contexts
- Perpetrators – how do we capture and analyse known, unknown and secondary perpetrators
- Time frames – past 12 months, lifetime, other
- Reporting practices – combined prevalence or reporting prevalence of TFVAW separately
- Instrument/Questionnaire length and interviewer and interviewee fatigue

# Example 1: Denominator and prevalence challenges



# ETHICAL AND SAFETY CONSIDERATIONS +UPDATE



- ★ Safety of respondents and survey/research team is paramount
- ★ Methodologically sound and build on current research experience
- ★ Protecting confidentiality is essential
- ★ Careful selection and training of research team
- ★ Minimise distress to participants and researchers
- ★ Ethical obligation to ensure findings are properly interpreted to advance policy and intervention
- ★ Violence questions should be incorporated *only* when ethical and methodological requirements are met

The safety of respondents and the research team is paramount and should guide all project decisions

**Technology and technology-facilitated methods can compromise the safety of participants and users**

### **Recommendations and considerations**

Consider carefully the type of method and technology and risk assessment

Consider the risks and mitigation strategies from the outset of the project/survey/study planning

- Obtaining valid informed consent in a safe way (e.g. consideration of 'gatekeepers')
- Establishing privacy at the start of the interview
- Preparing for interruptions (e.g. use of 'safe words')
- Ongoing consent and monitoring of safety and security
- Plan for ending the interview promptly if needed (e.g. violence or privacy breaches)

# Protecting confidentiality is essential to ensure both women's and researcher's and service provider safety and data quality

## **Maintaining confidentiality is affected by technology**

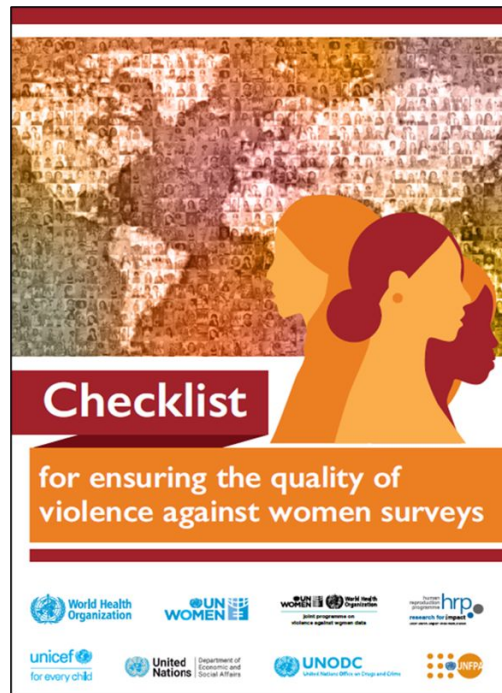
- Ensuring interviewer/researcher/service provider - privacy
- Access to appropriate technology and training for the research/service team,
- Safe data storage, transfer and communications transfer
- Managing recording of disclosures
- Ensuring anonymity in reporting and dissemination of findings

# Researchers have an ethical obligation to ensure their findings are properly interpreted and used to advance policy and intervention development

- Clear communication of scope and limitations imposed by remote methods
  - Representativeness
  - Non-response and non-completion rates
  - Accessibility and gatekeeper impacts
- Transparent discussion of any data quality issues and lessons learned
- Careful consideration of reporting and communication of findings and key messages to avoid mis-interpretation and stigmatization of any group or sub-population
- Ensuring that fully anonymized data be available for local researchers and secondary analyses to inform policy and programming

# Concluding thoughts

- Choose the appropriate methods and data for your research question
- Draw strength from complimentary methods and data sources
- Invest in methodological and measurement work to more adequately capture the magnitude, extent, contexts and risks of TFVAW and the populations most affected
- Balance comparability of measures over time with measuring emerging forms of TFVAW
- Balance standardization and context specific measures
- Fundamental to safely field test methods and interventions in diverse settings
- Safety and privacy are paramount! Do no harm! Ethical and robust methods are key to valid data



**IMPORTANT: DRAW FROM AND EXPAND LONG-STANDING EVIDENCE IN THE MEASUREMENT OF VIOLENCE AGAINST WOMEN**



***Chloé Lewis***

*Deputy Director of Research,  
Evaluation, and Learning –  
Equimundo*



***Taveeshi Gupta***

*Director of Research, Evaluation,  
and Learning – Equimundo*

**Thank you!**

---

